

Rotary Cam Switches



Front mounting Four hole mounting 104 × 104 mm

Front mounting switches with four hole mounting 104 × 104 mm

- 315 A
- 1 up to 24 contacts
- IP55 (front)



- ON-OFF Switch
- Multi-step Switch
- Changeover Switch
- Motor Switch

Setup of order code number: Type - Switching programme - Mounting form Ordering example: 4 pole ON-OFF Switch 90°, 315 A, G-handle silver/black →	Type	Switching programme	Mtg. form
	S825	61194	003G1
	Order code no. S825-61194-003G1		

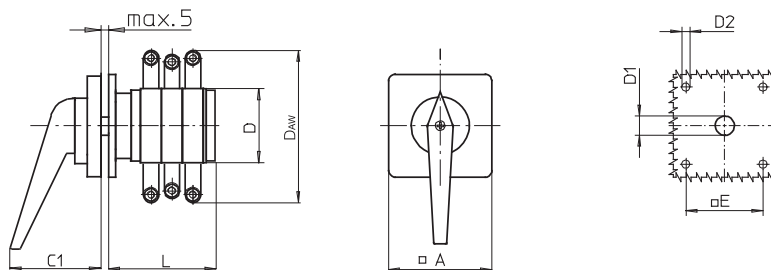
Type	Rated data (IEC 60947)			Terminal accessibility
	Operational current I _e AC-21A (A)	Operational power (at 380–440 V) AC-23A (kW) AC-3A (kW)		
S825	315	132	55	Terminals accessible laterally

Switching programme	Stages	Contacts	Description
61191	1	1	ON-OFF Switch 90°, 1 pole
61192	1	2	ON-OFF Switch 90°, 2 pole
61199	2	3	ON-OFF Switch 90°, 3 pole
61194	2	4	ON-OFF Switch 90°, 4 pole, 1 pole early make/late break
61001	1	1	ON-OFF Switch 60°, 1 pole
61002	1	2	ON-OFF Switch 60°, 2 pole
61003	2	3	ON-OFF Switch 60°, 3 pole
61025	1	2	Changeover Switch with centre OFF 60°, 1 pole
61027	3	6	Changeover Switch with centre OFF 60°, 3 pole
61037	1	2	Changeover Switch without OFF 60°, 1 pole
61050	2	4	Multi-step Switch without OFF, 4 steps, 1 pole

Switching diagrams and further switching programmes from page 56.

Mounting form	Operator
003G1	G-handle silver/black

Dimensions in mm:



Type	A	C1	D	D _{AW}	D1	D2	E	L with ... stages (max. 12)							each additional
								1	2	3	4	5	6	7	
S825	130	74	120	210	20	5.5	104	89	125	161	197	233	269	305	36

Rotary Cam Switches

Base mounting Four hole mounting 104 × 104 mm


Base mounting switches with four hole mounting 104 × 104 mm

- **315 A**
- 1 up to 24 contacts
- IP55 (front)
- Four hole front mounting 104 × 104 mm




- ON-OFF Switch
- Multi-step Switch
- Changeover Switch
- Motor Switch

Setup of order code number: Type - Switching programme - Mounting form Ordering example: 2 pole Changeover Switch with centre OFF 60°, 315 A, G-handle silver/black →	Type	Switching programme	Mtg. form
	S825	61026	002G1
	Order code no. S825-61026-002G1		

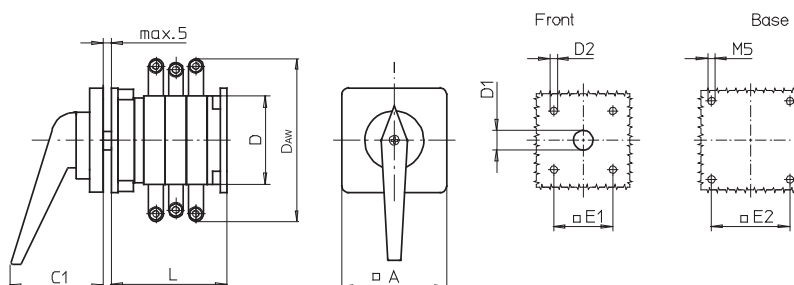
Type	Rated data (IEC 60947)			Terminal accessibility
	Operational current I _e AC-21A (A)	Operational power (at 380–440 V) AC-23A (kW) AC-3A (kW)		
S825	315	132	55	 Terminals accessible laterally

Switching programme	Stages	Contacts	Description
61191	1	1	ON-OFF Switch 90°, 1 pole
61192	1	2	ON-OFF Switch 90°, 2 pole
61001	1	1	ON-OFF Switch 60°, 1 pole
61002	1	2	ON-OFF Switch 60°, 2 pole
61003	2	3	ON-OFF Switch 60°, 3 pole
61025	1	2	Changeover Switch with centre OFF 60°, 1 pole
61026	2	4	Changeover Switch with centre OFF 60°, 2 pole
61027	3	6	Changeover Switch with centre OFF 60°, 3 pole
61037	1	2	Changeover Switch without OFF 60°, 1 pole
61038	2	4	Changeover Switch without OFF 60°, 2 pole
61050	2	4	Multi-step Switch without OFF, 4 steps, 1 pole

Switching diagrams and further switching programmes from page 56.

Mounting form	Operator
002G1	 G-handle silver/black

Dimensions in mm:



Type	A	C1	D	D _{AW}	D1	D2	E1	E2	L with ... stages (max. 12)						each additional
									1	2	3	4	5	6	
S825	130	74	120	210	20	5.5	104	104	96	132	168	204	240	276	36

Rotary Cam Switches



Base mounting Four hole mounting 104 × 104 mm / Door clutch

Base mounting switches with four hole mounting 104 × 104 mm / Door clutch

- **315 A** ■ 1 up to 24 contacts
- IP55 (front)
- Four hole front mounting 104 × 104 mm



- ON-OFF Switch • Changeover Switch
- Multi-step Switch • Motor Switch

Setup of order code number: Type - Switching programme - Mounting form Ordering example: 3 pole Changeover Switch with centre OFF 60°, 315 A, G-handle silver/black →	Type	Switching programme	Mtg. form
	S825	61027	041G1
	Order code no. S825-61027-041G1		

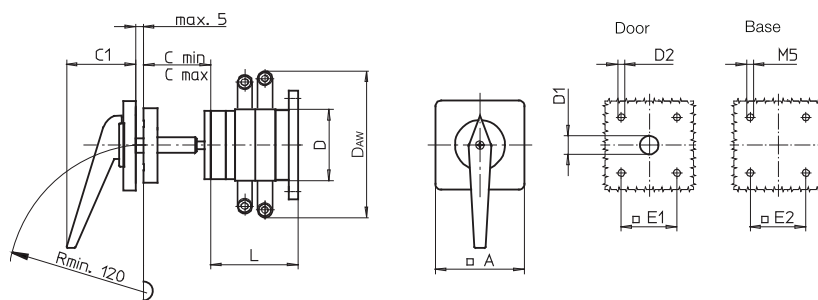
Type	Rated data (IEC 60947)			Terminal accessibility
	Operational current I _o AC-21A (A)	Operational power (at 380–440 V) AC-23A (kW) AC-3A (kW)		
S825	315	132	55	Terminals accessible laterally

Switching programme	Stages	Contacts	Description
61191	1	1	ON-OFF Switch 90°, 1 pole
61192	1	2	ON-OFF Switch 90°, 2 pole
61001	1	1	ON-OFF Switch 60°, 1 pole
61002	1	2	ON-OFF Switch 60°, 2 pole
61003	2	3	ON-OFF Switch 60°, 3 pole
61025	1	2	Changeover Switch with centre OFF 60°, 1 pole
61026	2	4	Changeover Switch with centre OFF 60°, 2 pole
61027	3	6	Changeover Switch with centre OFF 60°, 3 pole
61037	1	2	Changeover Switch without OFF 60°, 1 pole
61038	2	4	Changeover Switch without OFF 60°, 2 pole
61050	2	4	Multi-step Switch without OFF, 4 steps, 1 pole

Switching diagrams and further switching programmes from page 56.

Mounting form	Operator
041G1	G-handle silver/black

Dimensions in mm:



Type	A	C _{min}	C _{max}	C1	D	D _{AW}	D1	D2	E1	E2	L with ... stages (max. 12)				each additional
											1	2	3	4	
S825	130	75	102	74	120	210	20	5.5	104	104	90	126	162	198	36

Rotary Cam Switches

Base mounting Four hole mounting 104 × 104 mm / Door interlock


Base mounting switches with four hole mounting 104 × 104 mm / Door interlock

- **315 A** ■ 1 up to 24 contacts
- IP55 (front)
- Four hole front mounting 104 × 104 mm

- ON-OFF Switch • Changeover Switch
- Multi-step Switch • Motor Switch



Setup of order code number: Type - Switching programme - Mounting form Ordering example: 3 pole ON-OFF Switch 90°, 315 A, G-handle silver/black →	Type	Switching programme	Mtg. form
	S825	61199	042G1
	Order code no. S825-61199-042G1		

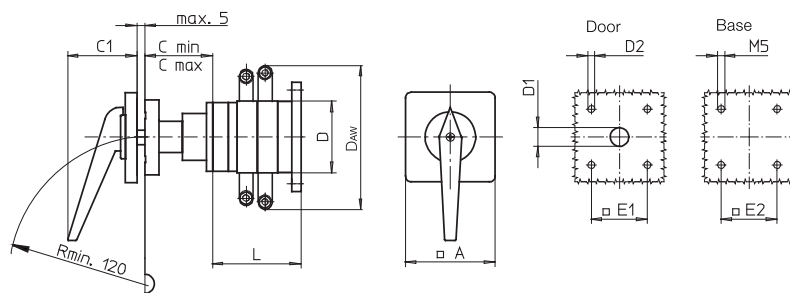
Type	Rated data (IEC 60947)			Terminal accessibility
	Operational current I _e AC-21A (A)	Operational power (at 380–440 V) AC-23A (kW) AC-3A (kW)		
S825	315	132	55	 Terminals accessible laterally

Switching programme	Stages	Contacts	Description
61191	1	1	ON-OFF Switch 90°, 1 pole
61192	1	2	ON-OFF Switch 90°, 2 pole
61199	2	3	ON-OFF Switch 90°, 3 pole
61001	1	1	ON-OFF Switch 60°, 1 pole
61002	1	2	ON-OFF Switch 60°, 2 pole
61003	2	3	ON-OFF Switch 60°, 3 pole
61025	1	2	Changeover Switch with centre OFF 60°, 1 pole
61026	2	4	Changeover Switch with centre OFF 60°, 2 pole
61027	3	6	Changeover Switch with centre OFF 60°, 3 pole
61037	1	2	Changeover Switch without OFF 60°, 1 pole
61038	2	4	Changeover Switch without OFF 60°, 2 pole
61050	2	4	Multi-step Switch without OFF, 4 steps, 1 pole

Switching diagrams and further switching programmes from page 56.

Mounting form	Operator
042G1	 G-handle silver/black

Dimensions in mm:



Type	A	C _{min}	C _{max}	C1	D	D _{AW}	D1	D2	E1	E2	L with ... stages (max. 12)				each additional
											1	2	3	4	
S825	130	75	102	74	120	210	20	5.5	104	104	90	126	162	198	36